



HANDS UP MALLEE

Result Area 1

Safe, secure & supported

All parents are supported in their role as primary carers and first teachers of their children

Priority Outcomes

1. Safely reduce the number of children in Out of Home Care
2. Reduce family violence incidences



Result Area 2

Healthy and well

All children and young people enjoy a high standard of health and wellbeing

Priority Outcomes

3. Reduce the number of children born at a low birth weight
4. Improve healthy eating and oral health in childhood and adolescence
5. Improve physical activity in childhood and adolescence
6. Promote sexual health and wellbeing in teenagers
7. Improve social and emotional health and increase resilience

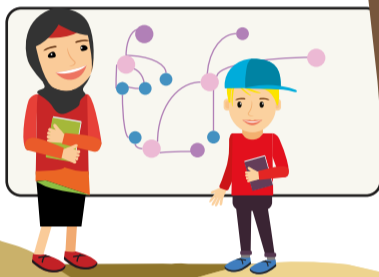


Result Area 3

Developing potential
All children and young people are participating in learning, education or earning

Priority Outcomes

8. Improve attendance in early childhood and school settings
9. Decrease the number of children who are developmentally vulnerable in one or more AEDC domains
10. Improve literacy and numeracy results in years 3, 5, 7 & 9
11. Increase year 12 or equivalent completion rates



Result Area 4

Connected to community & culture

All children and young people and their families are connected to their community and culture

Priority Outcomes

12. Increase volunteering in the community
13. Improve community acceptance of diverse cultures
14. Increase the number of community members who feel they are strongly connected to community



Plan on a Page

Our Vision

A connected community where families matter and children thrive

About Hands Up Mallee

Hands Up Mallee is a Social Impact Initiative, based in the Northern Mallee region. Hands Up Mallee was established to bring local leaders and community together to address social issues and improve health and wellbeing outcomes for children, young people and their families.

Our Focus

First 1000 Days - Conception to 2 Years

Best Start To Life - 3 to 8 Years

Young People Matter - 9 to 14 Years

Tread Your Own Path - 15 to 25 Years

Each of these areas has its own Plan on a Page, detailing key indicators

About the Northern Mallee

Situated in Victoria's north-west, the local government area (LGA) of Mildura covers around 10% of the state's area and has a population of approximately 55,000. The region is renowned for its big skies, rich earth (which accounts for it being known as Victoria's food bowl) and the mighty Murray River. It has a proud and longstanding reputation as a place of creativity and resourcefulness.

However, the Mildura LGA is also profoundly disadvantaged and faces numerous complex social problems.

Despite this level of disadvantage, Mildura is a resilient, resourceful and connected community. Our geographic isolation has fostered a strong sense of self-reliance, and we are well known for doing things in innovative ways to meet the needs of our own unique community.

Our Shared Approach

Hands Up Mallee is adopting a People Supporting People approach towards working with organisations, services and community groups; in an effort to strengthen and support families during the life course of their children from pre-conception to 25 years of age. In doing so we seek to improve the life paths for all our young people so that they and their community can thrive.

How we work

We work using a tight-loose-tight approach:
tight: clear outcomes set
loose: how they are achieved
tight: close monitoring and accountability for achieving results

Our Principles

Respect - Valuing and including community diversity strengthens relationships and builds trust

Commitment - Learning, leading and innovating builds community capacity for Collective Impact

Continuous Improvement - Sharing ownership of the Common Agenda aligns resources and improves community outcomes

Accountability - Keeping ourselves and each other accountable to the Common Agenda ensures quality outcomes for our community